

STAGE 1- AMENDMENT
BUILDING ENVELOPE AND
FOOTPRINT

ezzyarchitects



DA/371/2015:
Hornsby Westside Apartments
May 2015



PO Box 1727 Hornsby, Westfield NSW 1635
T +61 2 9482 1230 | F +61 2 9482 1214 | E access1@ezzyarchitects.net.au | W ezzyarchitects.com.au
NSW Architects Registration Board, Nominated Architect Ian Ezzy. Registration Number 2387 | ABN 51 001 856 999



Illustrative Concept - View towards Hornsby Park (north)



Note: Building envelopes shown are indicative only



ezzy architects
sustainable planning

Illustrative proposed concept on "Triangle Site" - view from Cenotaph Park (South) towards Hornsby Park



Note: Building envelopes shown are indicative only

Hornsby West Side Precinct | Structure Plan

03

ILLUSTRATIVE PROPOSED BUILDING – TRIANGLE SITE CORNER

Illustrative Concept - View from Hornsby Park (south)



Note: Building envelopes shown are indicative only



Illustrative proposed concept on "Triangle site" - view from Hornsby Park towards South



Note: Building envelopes shown are indicative only



ILLUSTRATIVE FUTURE BUILDING ENVELOPES – VIEW A

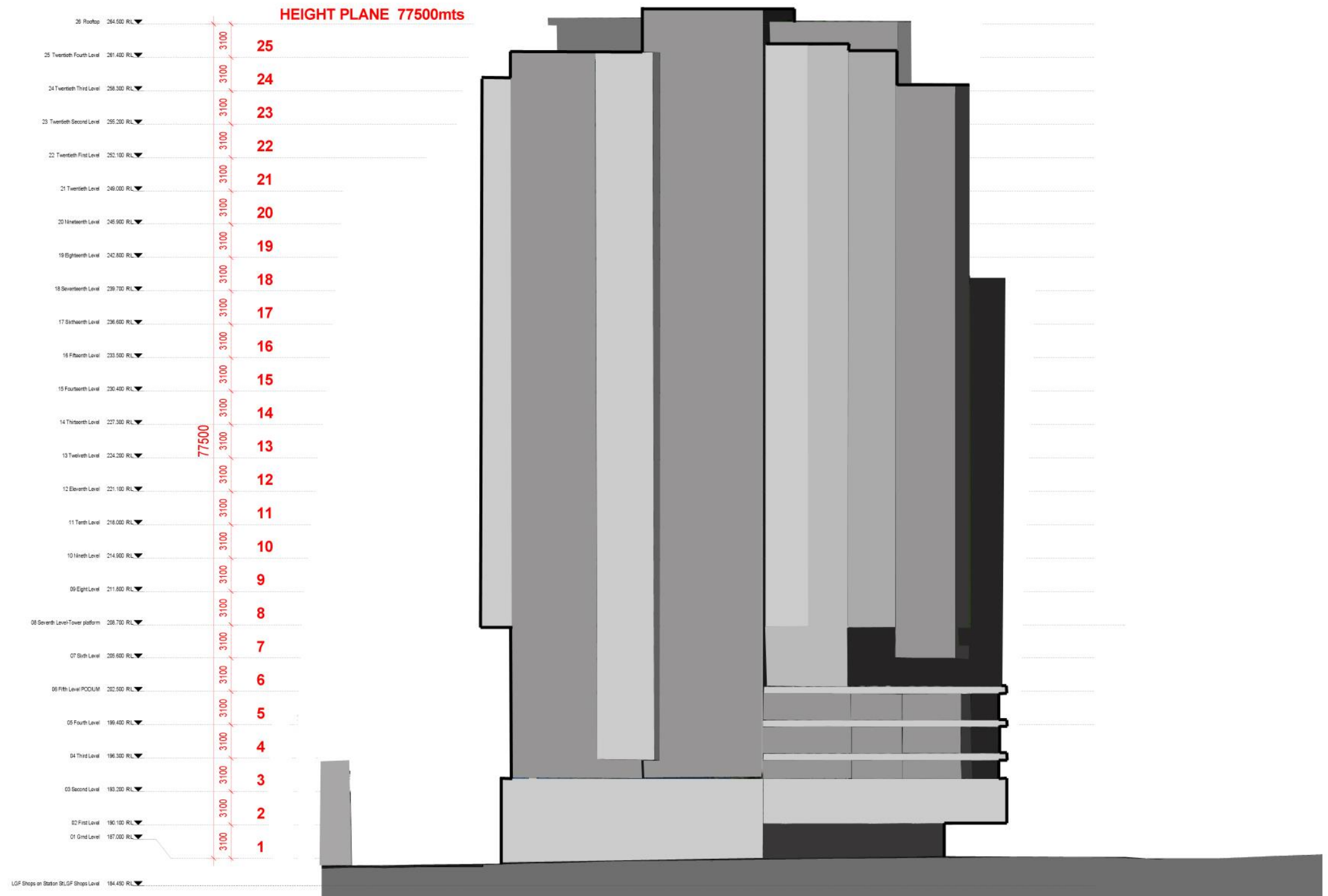


ILLUSTRATIVE FUTURE BUILDING ENVELOPE - VIEW B



ILLUSTRATIVE FUTURE BUILDING ENVELOPES – VIEW C

BUILDING ENVELOPE ON PEATS FERRY ROAD



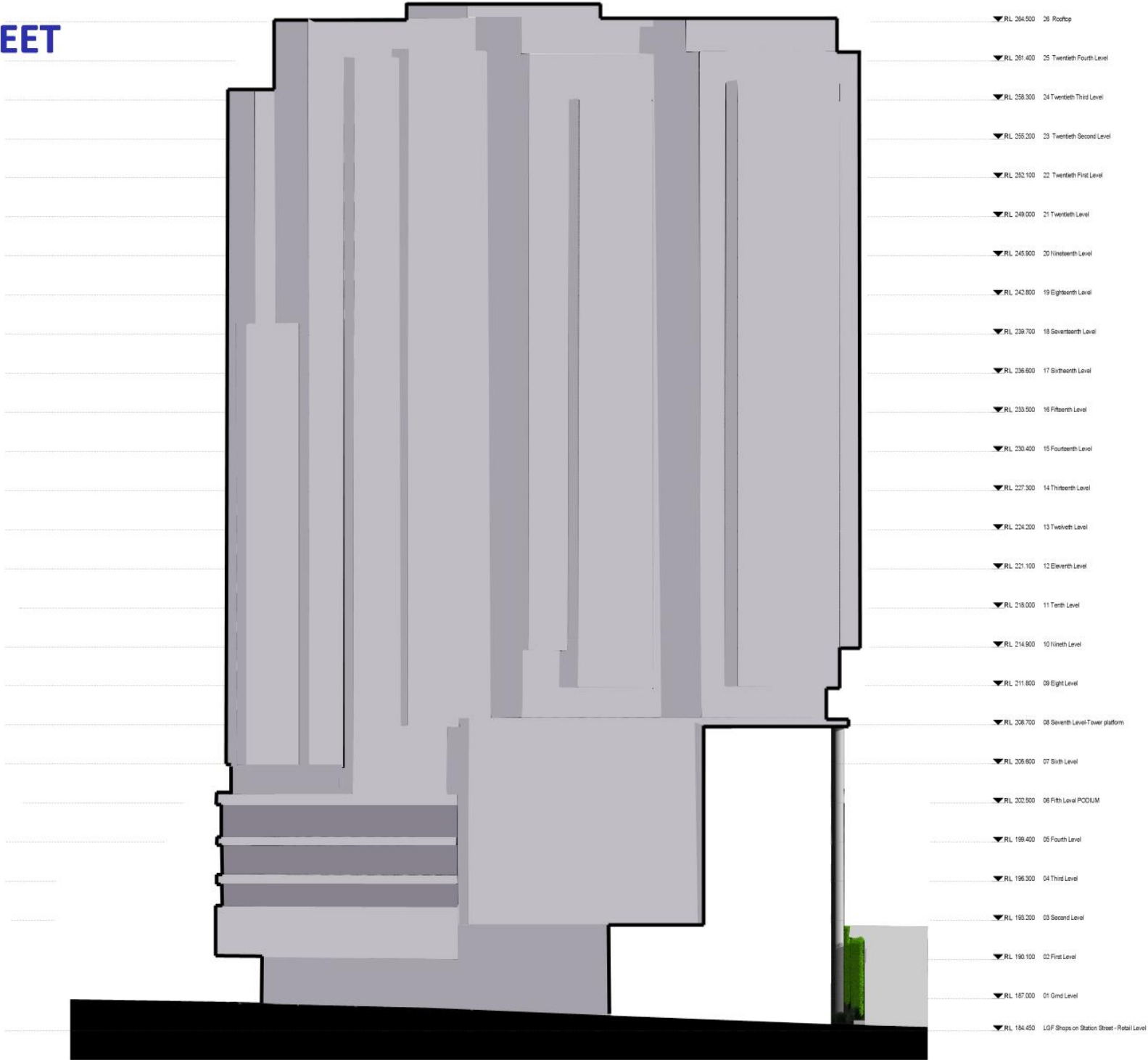
THE JUNCTION - Hornsby Westside Apartments

Corner Pacific Highway and Station Street

PEATS FERRY ROAD – BUILDING ENVELOPE



BUILDING ENVELOPE ON STATION STREET



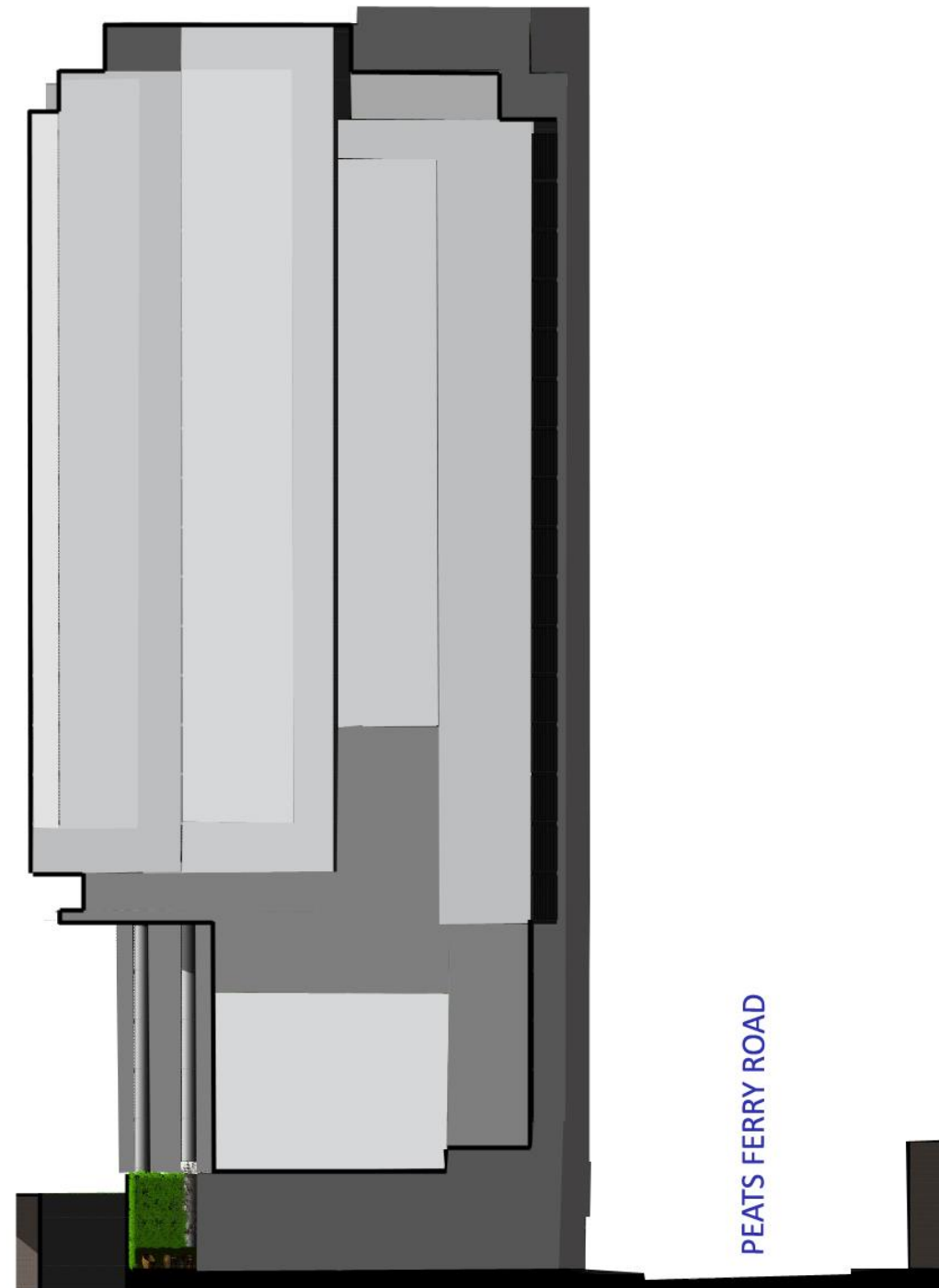
THE JUNCTION - Hornsby Westside Apartments

Corner Pacific Highway and Station Street

STATION STREET – BUILDING ENVELOPE



BUILDING ENVELOPE WINTER GARDEN- NORTHERN VIEW

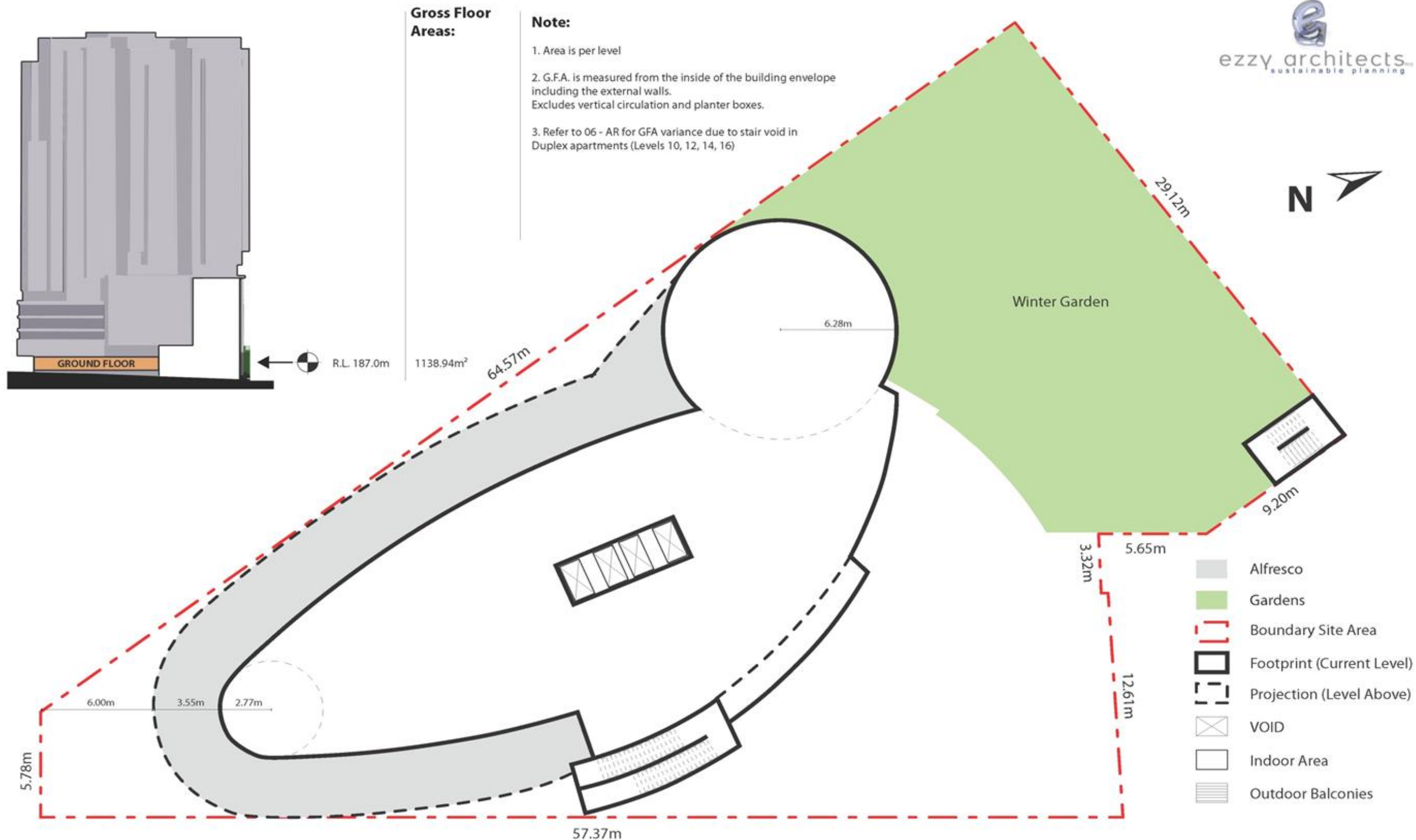


THE JUNCTION - Hornsby Westside Apartments

Corner Pacific Highway and Station Street

WINTER GARDEN NORTHERN VIEW – BUILDING ENVELOPE





Building Envelope

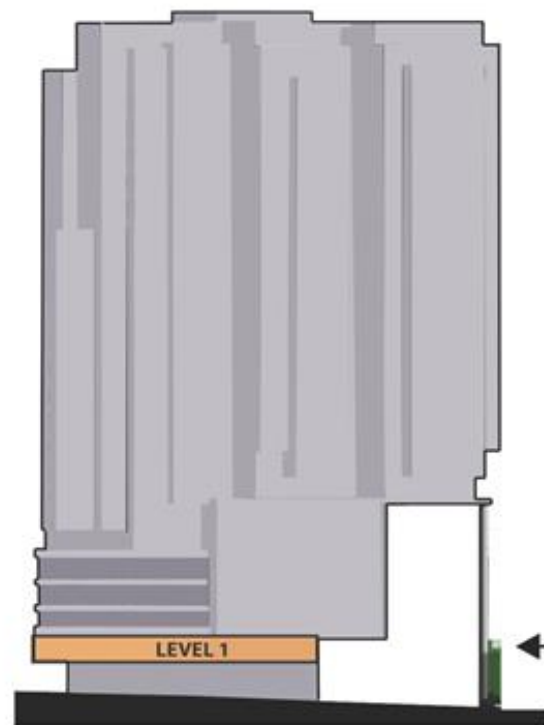
GROUND FLOOR



Gross Floor Areas:

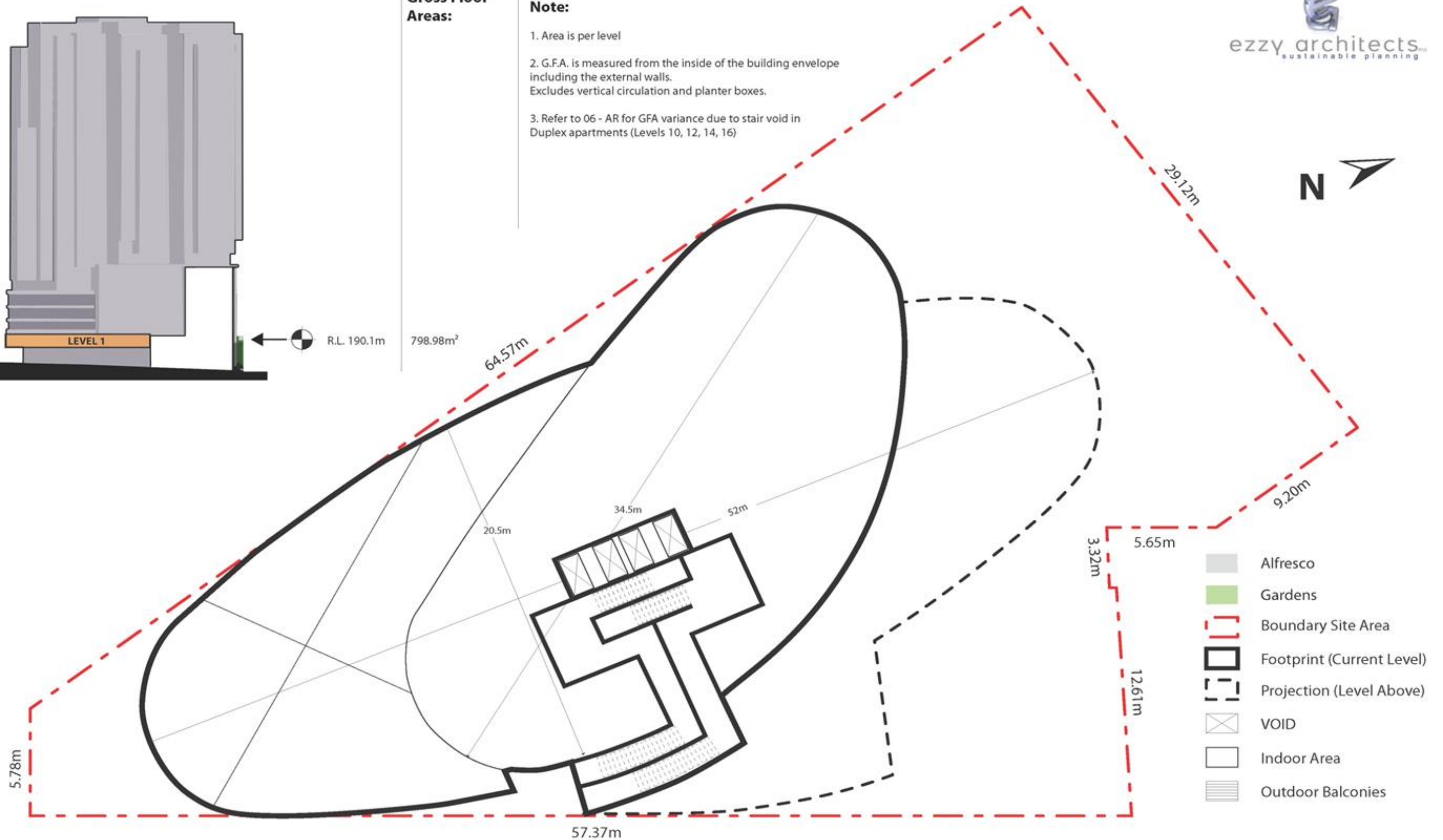
Note:

1. Area is per level
2. G.F.A. is measured from the inside of the building envelope including the external walls. Excludes vertical circulation and planter boxes.
3. Refer to 06 - AR for GFA variance due to stair void in Duplex apartments (Levels 10, 12, 14, 16)



R.L. 190.1m

798.98m²



Building Envelope

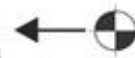
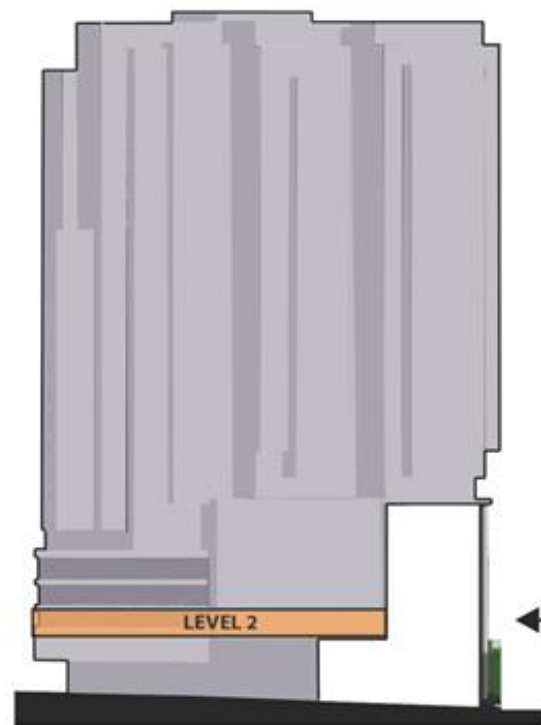
LEVEL 1



Gross Floor Areas:

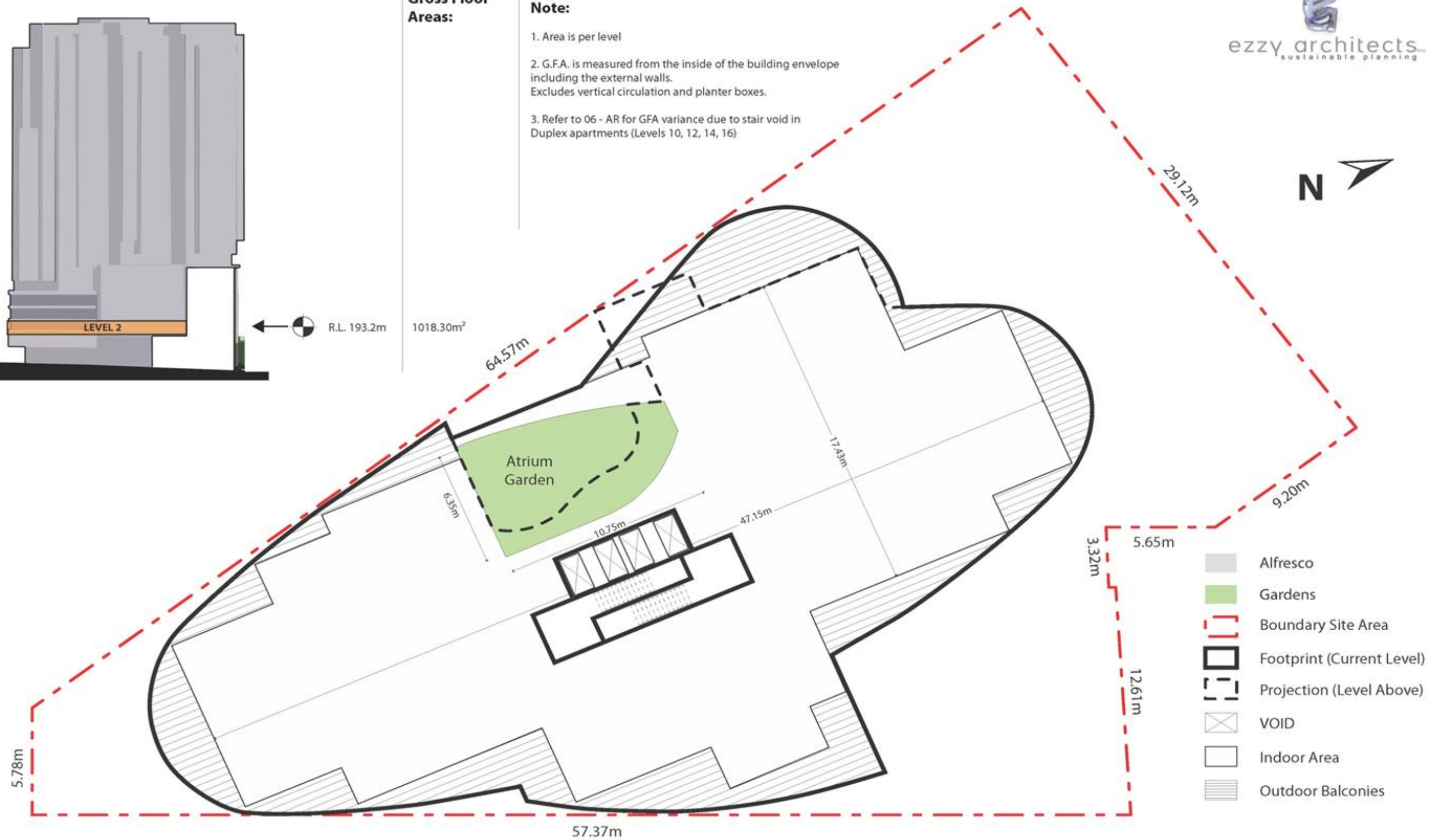
Note:

1. Area is per level
2. G.F.A. is measured from the inside of the building envelope including the external walls. Excludes vertical circulation and planter boxes.
3. Refer to 06 - AR for GFA variance due to stair void in Duplex apartments (Levels 10, 12, 14, 16)



R.L. 193.2m

1018.30m²



Building Envelope

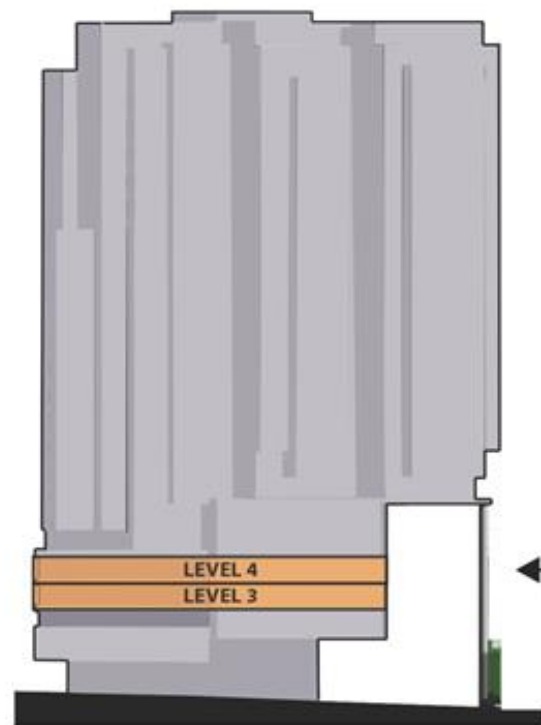
LEVEL 2



Gross Floor Areas:

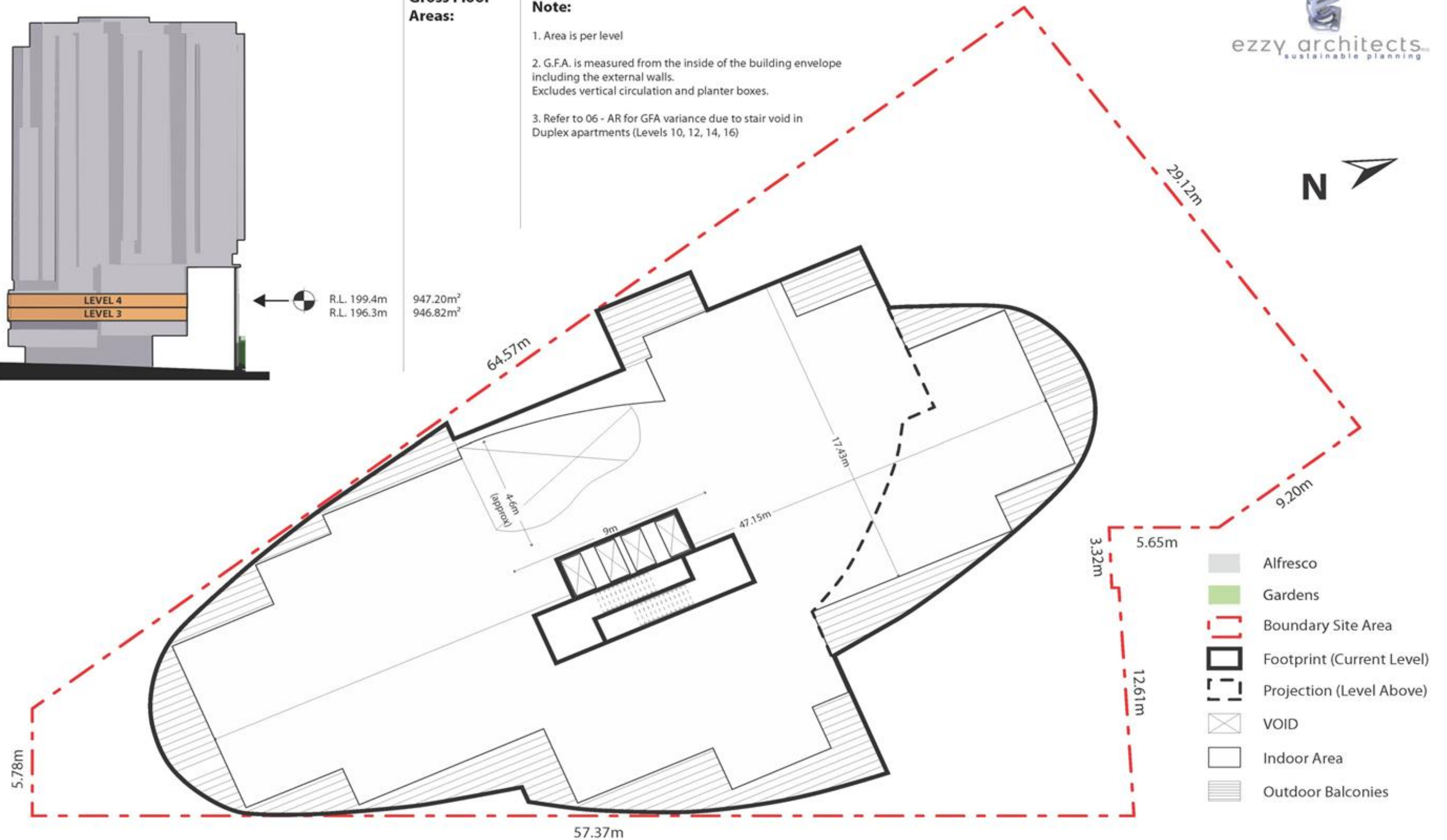
Note:

1. Area is per level
2. G.F.A. is measured from the inside of the building envelope including the external walls. Excludes vertical circulation and planter boxes.
3. Refer to 06 - AR for GFA variance due to stair void in Duplex apartments (Levels 10, 12, 14, 16)



R.L. 199.4m
R.L. 196.3m

947.20m²
946.82m²



Building Envelope

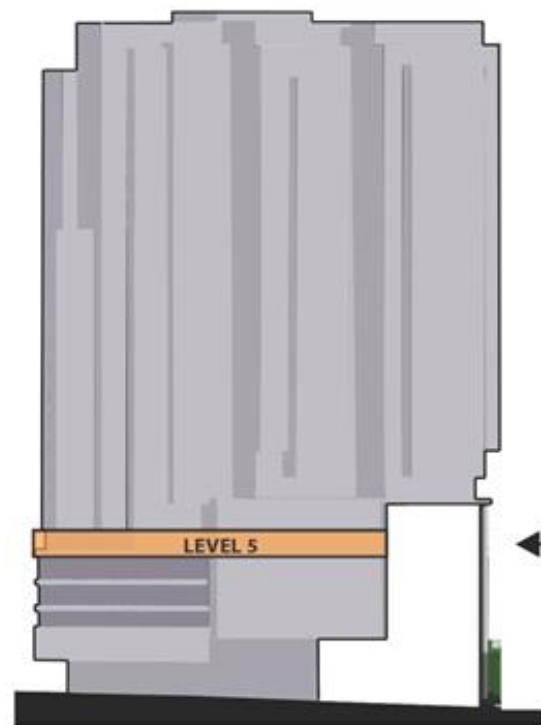
LEVELS 3-4 (TYPICAL FOOTPRINT)



Gross Floor Areas:

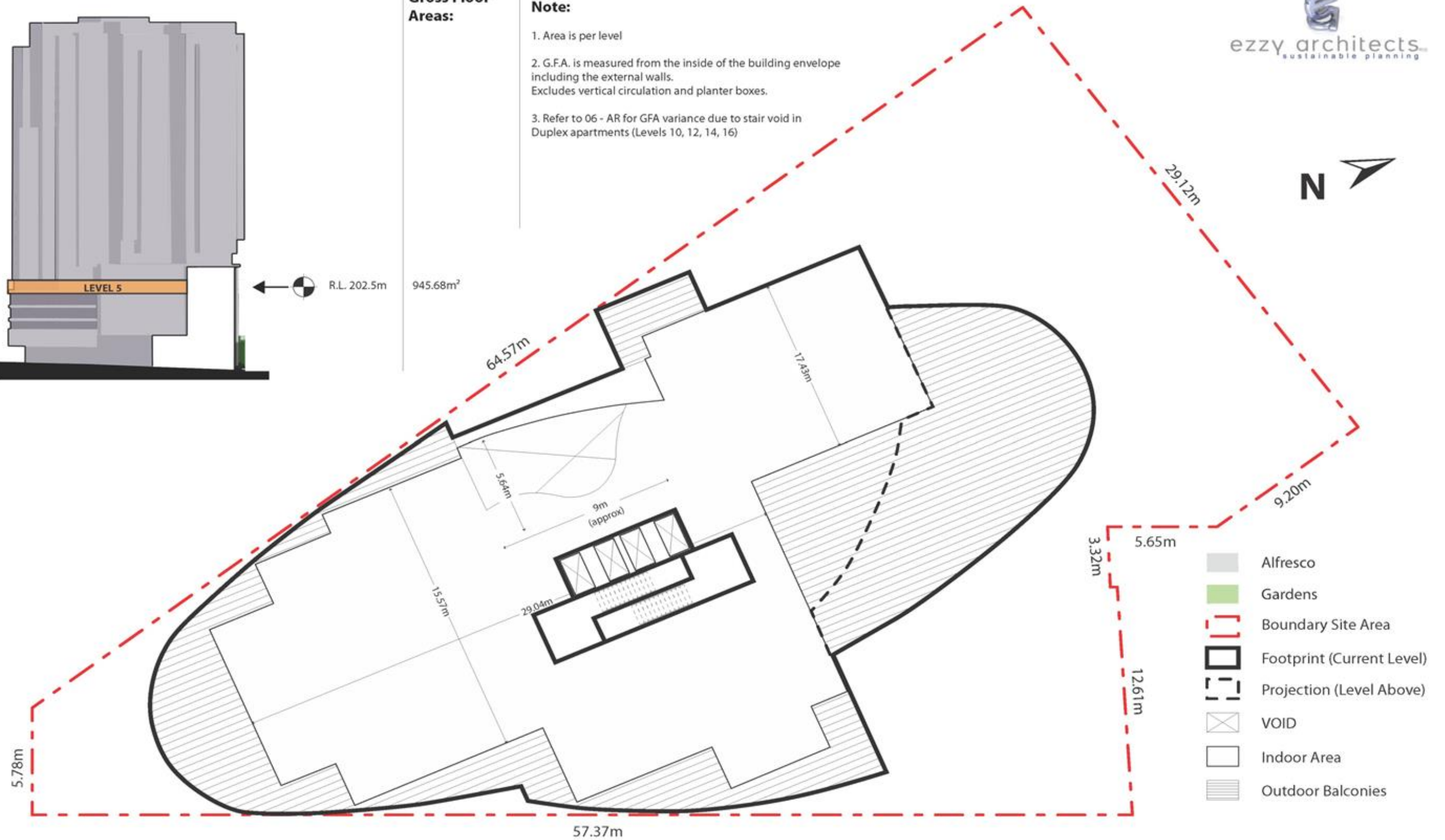
Note:

1. Area is per level
2. G.F.A. is measured from the inside of the building envelope including the external walls. Excludes vertical circulation and planter boxes.
3. Refer to 06 - AR for GFA variance due to stair void in Duplex apartments (Levels 10, 12, 14, 16)



R.L. 202.5m

945.68m²



Building Envelope

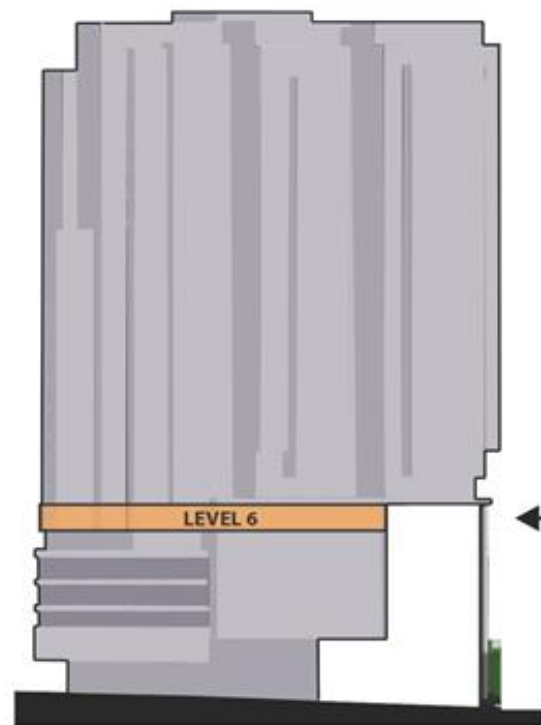
LEVEL 5



Gross Floor Areas:

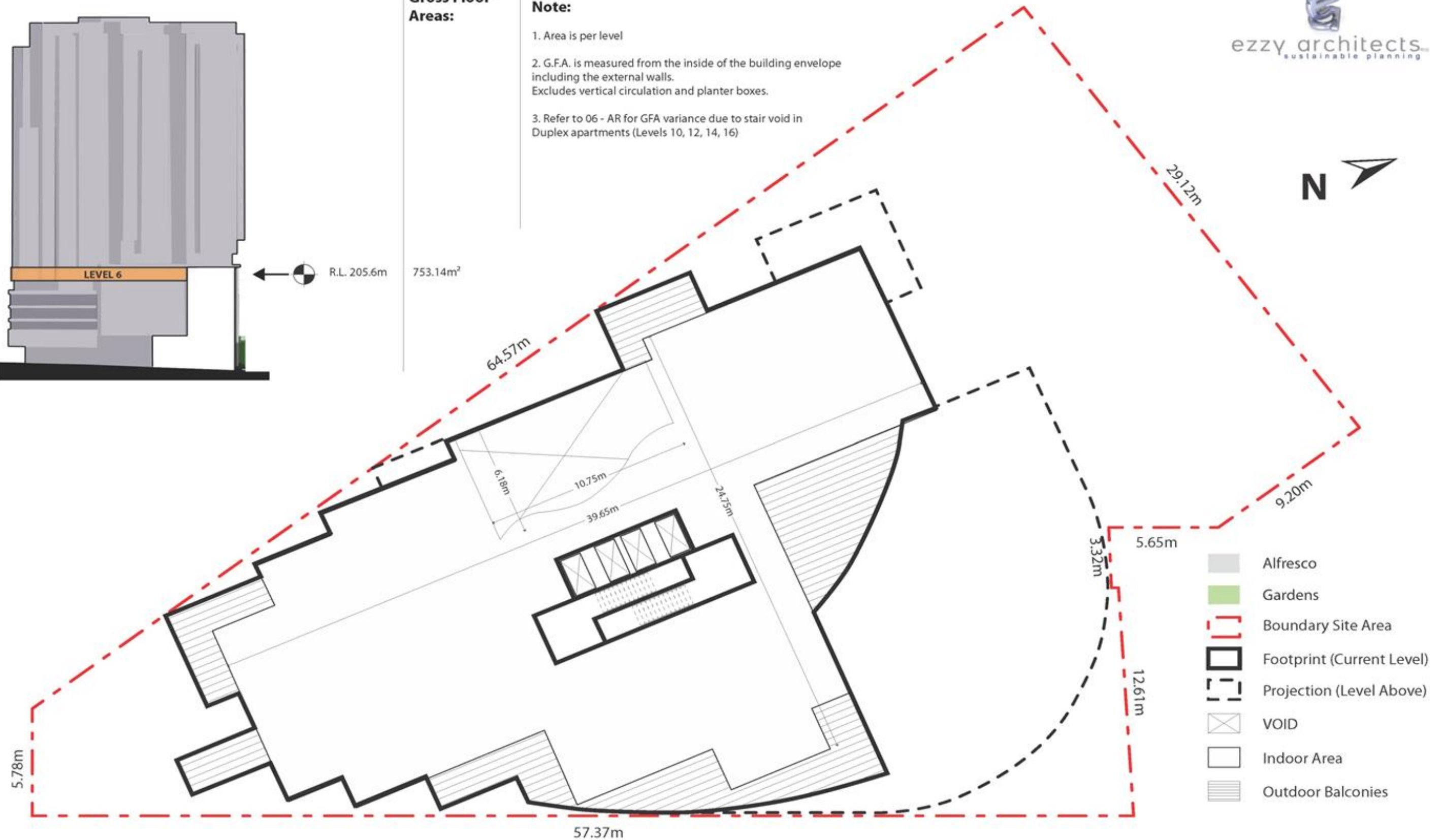
Note:

1. Area is per level
2. G.F.A. is measured from the inside of the building envelope including the external walls. Excludes vertical circulation and planter boxes.
3. Refer to 06 - AR for GFA variance due to stair void in Duplex apartments (Levels 10, 12, 14, 16)



R.L. 205.6m

753.14m²



- Alfresco
- Gardens
- Boundary Site Area
- Footprint (Current Level)
- Projection (Level Above)
- VOID
- Indoor Area
- Outdoor Balconies

Building Envelope

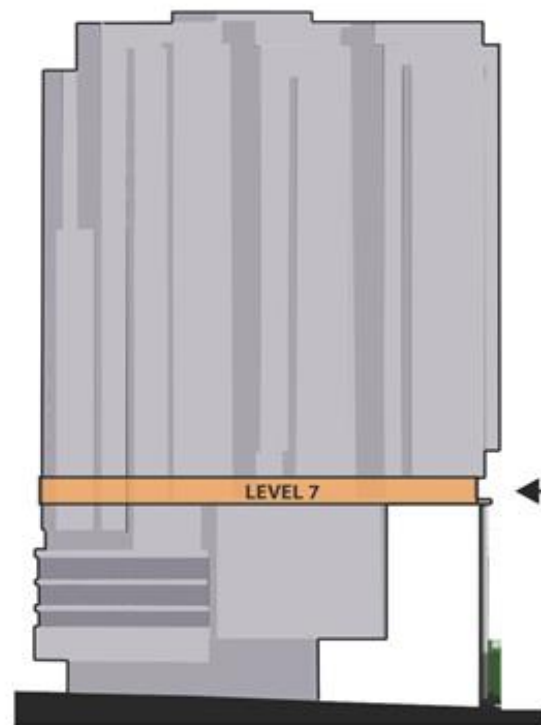
LEVEL 6



Gross Floor Areas:

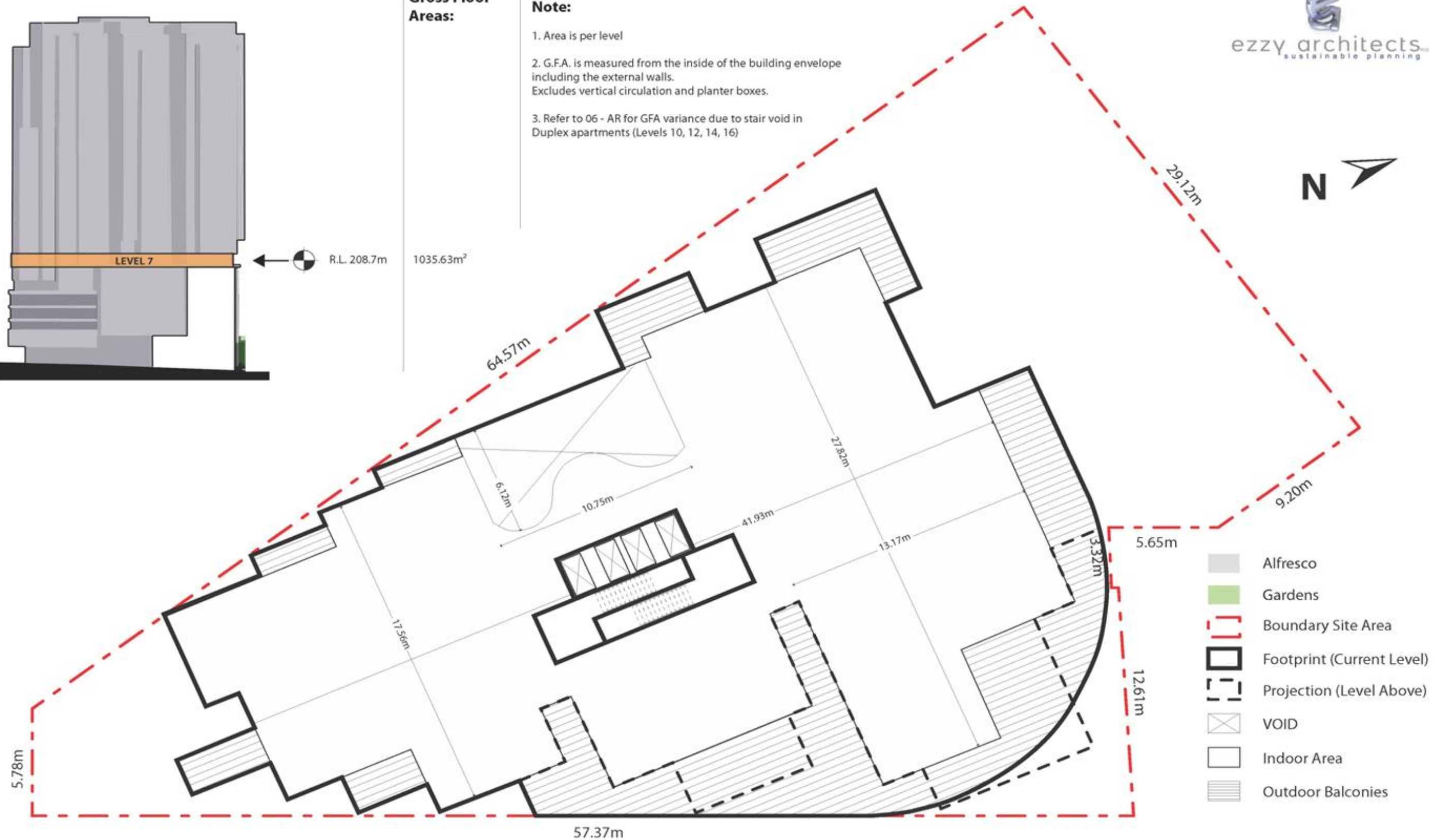
Note:

1. Area is per level
2. G.F.A. is measured from the inside of the building envelope including the external walls. Excludes vertical circulation and planter boxes.
3. Refer to 06 - AR for GFA variance due to stair void in Duplex apartments (Levels 10, 12, 14, 16)



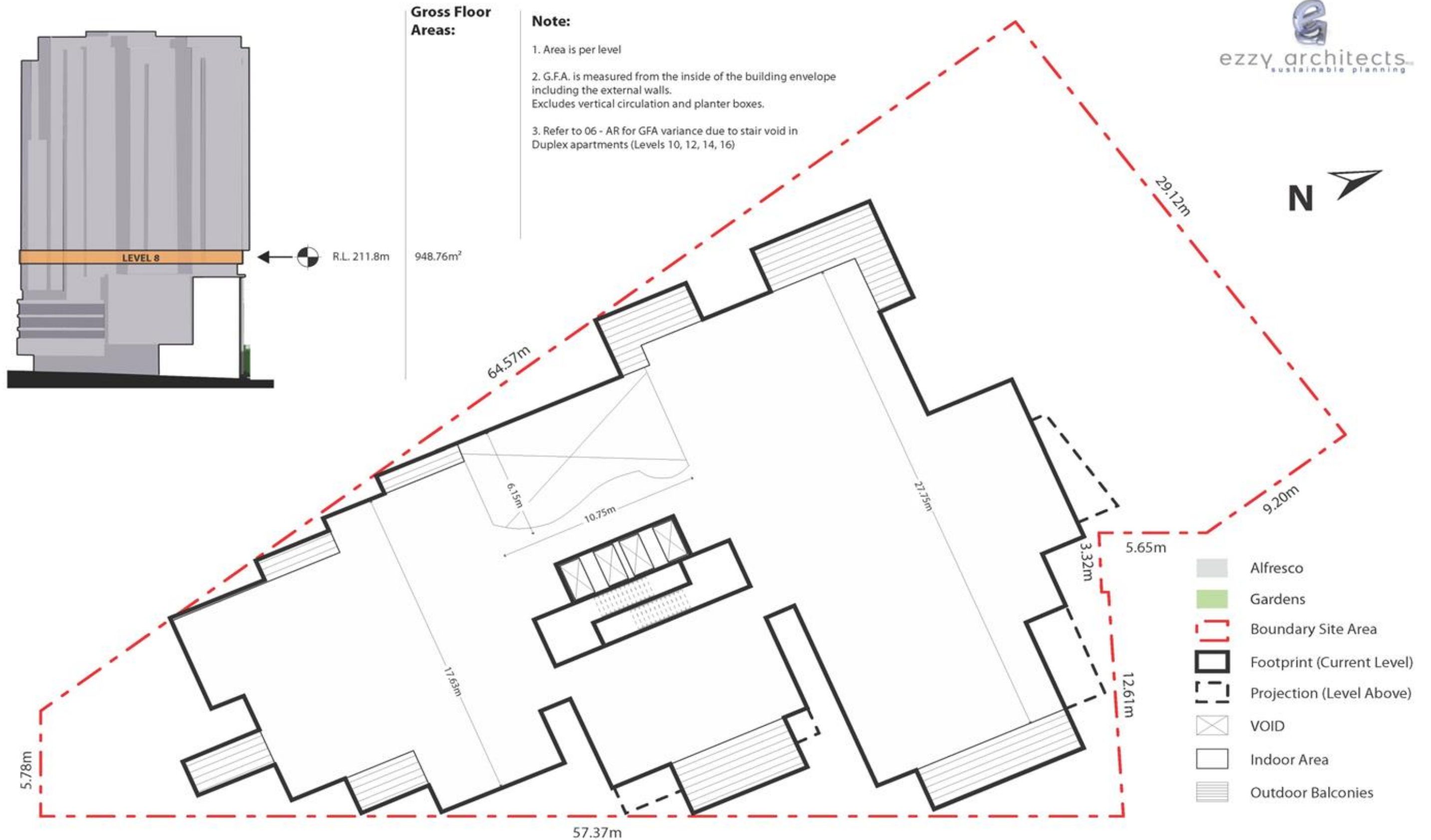
R.L. 208.7m

1035.63m²



Building Envelope

LEVEL 7



Building Envelope

LEVEL 8



Building Envelope

LEVELS 9-10
(TYPICAL FOOTPRINT)



Building Envelope

LEVELS 11-17
(TYPICAL FOOTPRINT)



Building Envelope

LEVELS 18-21
(TYPICAL FOOTPRINT)



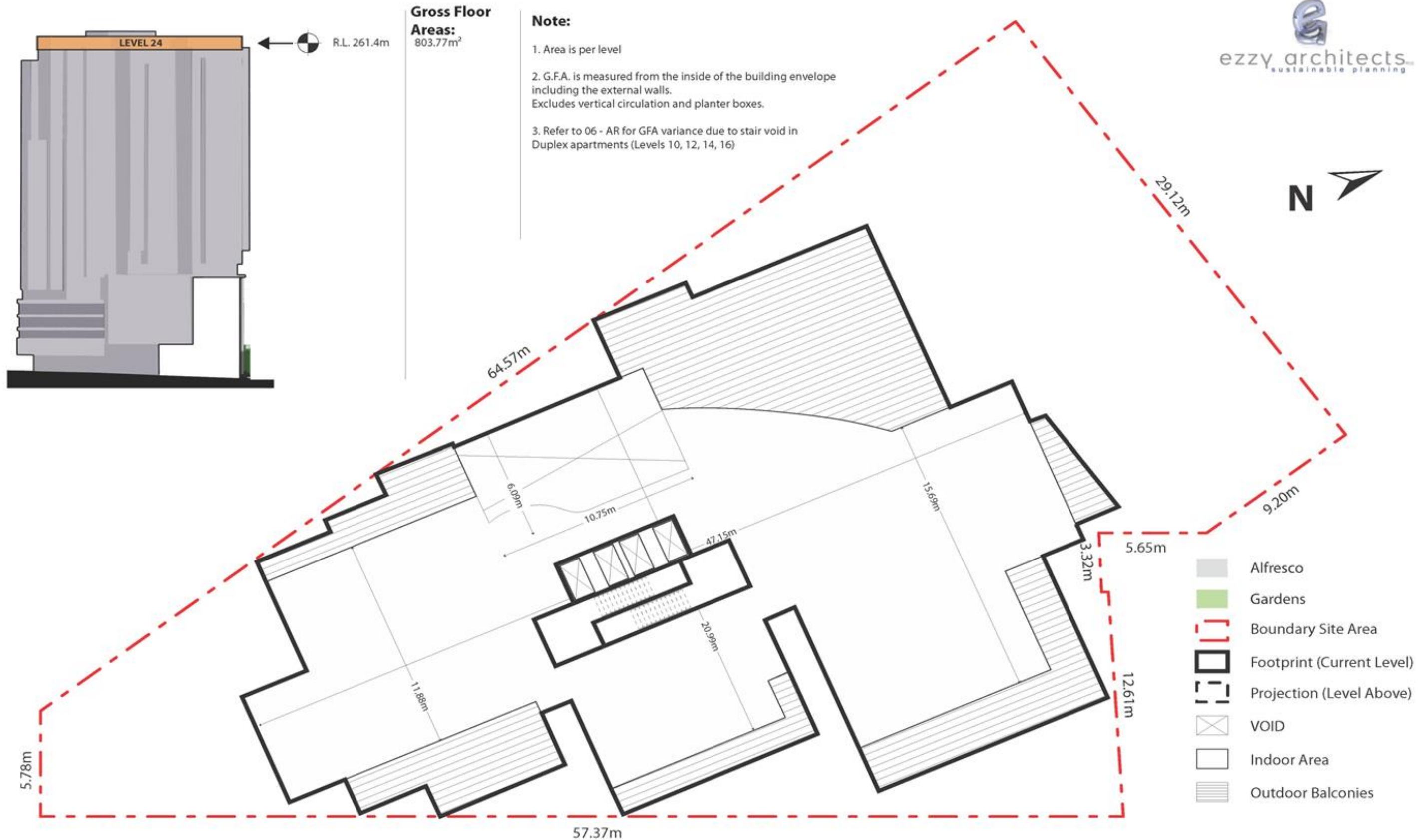
Building Envelope

LEVEL 22



Building Envelope

LEVEL 23



Building Envelope

LEVEL 24



ezzy architects
sustainable planning
Nominated Architect, Ian Ezzy

www.ezzyarchitects.com.au
Head Office Suite 301, 14 Hunter Street, Hornsby NSW 2077
Phone: (02) 9402 1230 Fax: (02) 9402 1214
Central Coast Office: 37 Bayview Avenue, Sutherland NSW 2256
Phone: (02) 4222 9130 Fax: (02) 4222 9132

The copyright of this design belongs to Ezzy Architects Pty Ltd.
DO NOT scale from drawings. Confirm dimensions on site prior to
commencement of works. Report any discrepancies and contact the
design office to clarify any conflicting or incongruent information.

SCALE 1:200
AT A1

0m 1m 2m 5m

**THE JUNCTION - Hornsby
Westside Apartments**

CLIENT Various

LOCATION Corner Pacific Highway and Station Street

Site Plan

PROJECT NO.	1334	BY	A.D	CHK	I.E
SHEET NO.	AR-00	REV.	16/12/2014	DATE	
		DA STAGED			

21/01/2015 11:53:32 AM



THE JUNCTION - Hornsby Westside Apartments

Corner Pacific Highway and station Street



PEDESTRIAN CROSSING ON PACIFIC HIGHWAY
JUNE 22nd - WINTER - 3pm

VIEW ACROSS CENOPATH PARK
JUNE 22nd - WINTER - 3pm



VIEW FROM NORTH ON PACIFIC HIGHWAY
JUNE 22nd - WINTER - 10am



VIEW FROM NORTH ON PACIFIC HIGHWAY
Across to Winter Garden and Restaurant on Ground Floor
JUNE 22nd - WINTER - 3pm



ALFRESCO AREAS GROUND FLOOR
WINTER 22062014 at 3pm
View from Park



THE JUNCTION - Hornsby Westside Apartments

Corner Pacific Highway and Station Street



LOWER GROUND FLOOR
Entry to Theatre
WINTER 22062014 at 10am
View from Station Street



PACIFIC HIGHWAY AERIAL VIEW
WINTER 22062014 AT 3PM



AERIAL VIEW - NORTH EAST SIDE
WINTER 22062014 at 11:30am